



BEBON INTERNATIONAL CO.,LTD.

TEL :0086-371-86151627

0086-371-86151827

E-mail:bb@bebonchina.com

Web:http://www.bebonchina.com

ADD:ROOM 2801 B# INTERNATIONAL ENTERPRISE
CENTER, NONGYE ROAD,ZHENGZHOU,450000 CHINA





Company

Henan BEBON international co.,ltd , located in Zhengzhou ,Henan province of China, is specialized in exporting steel products. Based on the domestic rich product resources and professional research on international market, BEBON's service has already spread many countries in Europe,North America, Southeast Asia, Middle East, South America, Africa, and so on.

We have three big warehouses. The first one is in Zhengzhou, which mainly stores profile steel, the quantity of ex-stock is about 4000tons. The another two are in Shanghai and Tianjin, which mainly store steel plates ,the quantity is about 6500tons. Besides, the steel product range in stock is complete, the reserve is big, and the delivery can be immediate.

We have built the long-term strategy cooperation with several chinese big steel mills, like Shou steel (in Beijing and Qinhuangdao) , Bao steel (in Shanghai), Wuyang steel (in Henan), Han steel (in Hebei), so we can carry on the production completely defer to the customers' request.

Our service is the "one-stop" work style. We have our pre-treatment factory and processing factory, which can offer the service such as cutting, welding, drilling holes, ball blasting, derusting, painting, galvanizing etc. in very cost price.

Good quality and fast delivery are the tenet of our work. All the marketing representatives of Bebon will do their best to solve the problems and find the solution for you. All my dear friends, you are very welcome to visit us.

Bebon always is your home in China!

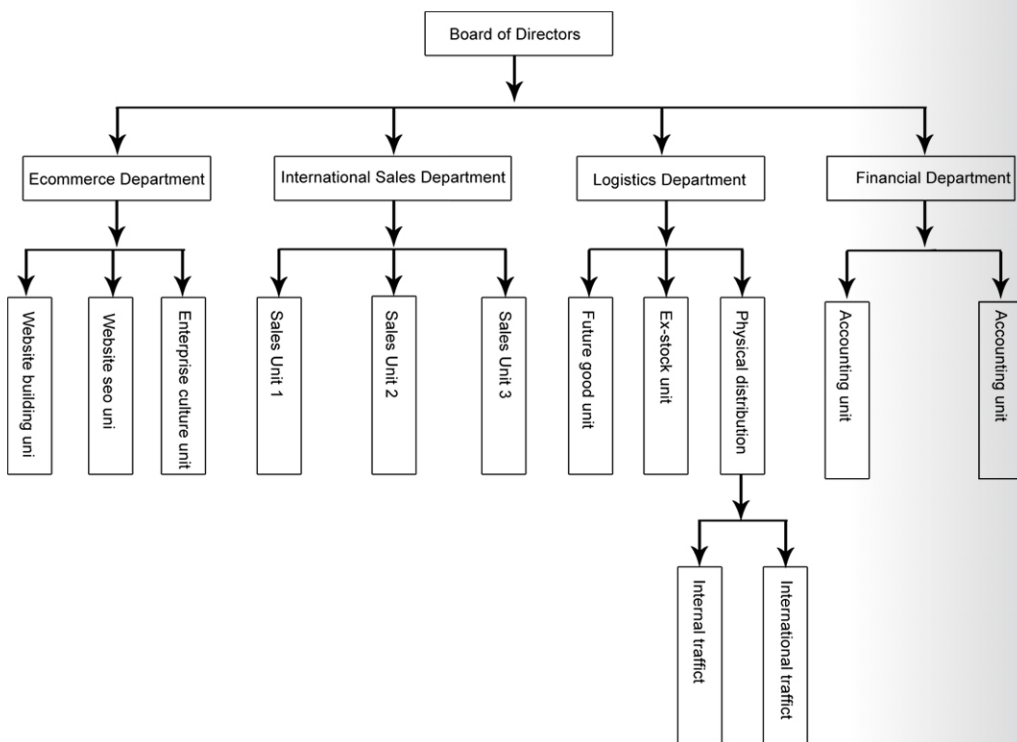


Catalog

- Carbon and low alloy steel
- Steel for Boilers and Pressure Vessels
- Steel for gas cylinders and gas vessels
- Steel For Ship Building
- Simple pressure vessels steel
- General purpose structural steels
- High carbon Steel
- High yield strength cold forming steels
- Structural steels with enhanced resistance to atmosphere corrosion
- High Yield Steel
- Weldable normalized fine grained pressure vessel steels
- Steel for large diameter pipes
- General Construction Steel
- Steel Resistant to Atmospherical Corrosion
- Fine-grain structural steels, normalised rolled
- Steel with Cr., Mo., Cr-Mo.
- Boiler steels
- Steel for Welded Tubes
- Fine-grain structural steels, thermomechanically rolled
- Stamping and cold forming steels
- High strength steels for cold-forming, normalised



Company Organizations



Company cultural

Our Vision: To be the leader of China's steel industry and become the trusted partner for all of our clients.

Our Mission: To serve the interest and the needs of the public, as well as of our clients, BEBON International will hold the belief "product quality and service foremost, sincerity and superior quality" forever.

Our tenet: Pursue customer satisfaction and ensure the best quality products

Our values: Enhance trust, insist quality and integrity, and consider for the customer.

We value the trust we have earned and will demonstrate integrity, respect and the highest level of quality to enhance the trust of our clients. Considering questions from customer's angle and thinking well of their opinions, to make our customers feel easy and, at the same time, satisfied with our services.

Supply Capacity/advantage

1. product category: steel plate, steel pipe, flat bar, profile steel, stainless steel

2. Product Specification Range mm:

steel plate(Thickness:1.5--450, Width:1200--4200, Length: 3000--18000)

seamless steel pipe(Diameter:10.3mm--965.2mm, Wall thickness:1.24mm --59.54mm)

Welded steel pipe(Diameter:32mm--2220mm, Wall thickness:2mm --60mm)

Stainless steel sheet/plate (Thickness:0.2mm--120mm, Width:1219mm--2000mm)

3. Stock monthly : We have two three warehouses-Zhengzhou(which mainly store profile steel, the quantity of ex-stock is about 4000tons),shanghai(which mainly store steel plate and stainless steel, the quantity of ex-stock is about 5500tons) Tianjin (which mainly store steel pipe and pipe fitting , the quantity is about 4500tons)

4. Service:

(1) Heat treatment(Normalizing, Tempering, Annealing, Normalizing & Tempering, Quenching and high temperature tempering)

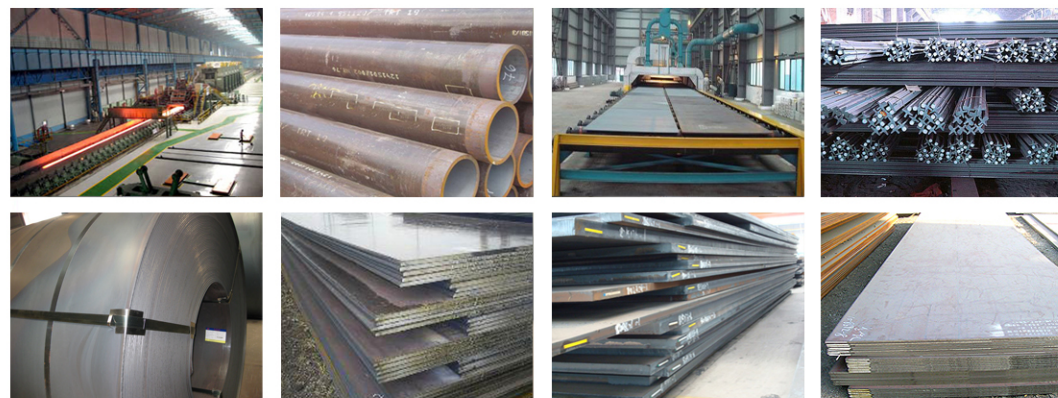
(2) Pre-treatment on the surface of steel plate: blasting and shop primed in ISO SA2.5 standard

(3) Test (UT, Impact test, HIC test, SSC test, Chemical Element Analysis, Performance Test, Magnetic powder test, DWTT, PWHT)

(4) Approved by (ISO9001)

(5) Other service: Cutting(NC Cutting), drill, machining, welding, Galvanization

(7) Cap and Bevel at the end of the steel pipe, painting and PE outside of the steel pipe, PL1 and PL2 test



Carbon and low alloy steel

Common carbon structural steel also be called mild steel. This kind of steel has very wide use. Because of the low carbon content and without alloy element, carbon structural steel has the proper tensile strength, good toughness, plasticity, processing property. Carbon structural steel usually be rolled into steel plates, shaped steel and profile steel, which usually used to build workshop, bridge, vessels and so on.

Europe			Germany	France	Italy	Belgium	Sweden	U. K.	Canada	Japan		International	USA
EN10025 (93)	EN10025 (90)	EN1011 3-2	DIN 17100	NFA 35-501	UNI 7070	NBN21 -101	MNC810E	BS4360	CSAG40-21	JIS3101	JIS 3106	ISO 630	ASTM
S185	Fe 310-0		St 33	A 33	Fe 320	A 320	SS13,00,00			SS 330			
												FE 310	A283 A,B,C,D
S235JR(G2)	Fe E360B (FN)		RSt 37-2	E 24-2	Fe 360 B	AE235 B	SS 13.11.00	40(A)B	230 G	SS400	SM 400 A	Fe 360 B	
S235 J0	Fe E 360 C		St 37-3U	E 24-3	Fe 360 C	AE235 C	SS 13,12,00	40 C			SM 400 B	Fe 360 C	A284 gr,C,D
S235J2G3	Fe E 360 D1		St 37-3 N	E 24-4	Fe 360 D	AE 235 D		40 D			SM 400 C	Fe 360 D	
S235J2G4	FeE360 D2							40 EE					A 36
						AE 255 A,B,C,D							
S275 JR	Fe 430 B		ST 44-2	E 28-2	Fe 430 B	AE295 B	SS14,12,00	43(A)B	260W,WT			Fe 430 B	A529 GR 42,50
S 275 J0	Fe 430 C		St44-3U	E 28-3	Fe 430 C	AE 295 C		43 C				Fe 430 C	
S275 J2G3	Fe 430 D1	S 275N	St 44-3N	E 28-4	Fe 430 D	AE 295 D	SS14,14,00	43 D				Fe 430 D	A572 gr,42,50
S275 J2G4	Fe 430 D2	S 275NL				AE 295 DD	SS14,14,01	43 EE					
							SS26,32,00		300W.WT				
							SS26,34,11						A 573 gr,58,65,70
							SS21,72,00						
							SS21,74,01						
S 355 JR	Fe 510 B		E 36-2	Fe 510 B	AE 355 B	SS21,32,01	50 B	350 W, WT	SS490	SM 490 A	Fe 510 B	A633 gr A,C,D	
S 355 J0	Fe 510 C		St 52-3 U	E 36-3	Fe 510 C	AE 355 C	SS21,34,01	50 C			SS 490 B	Fe 510 C	
S 355 J2G3	Fe 510 D1 Fe 510 D2	S 355 N	St 52-3 N		Fe 510 D	AE 355 D	SS 21,35,01	50 D			SS 490 C	Fe 510 D	
S 335J2G4	Fe 510 D D1 S 355 NL						SS 26,42,00				SS 490 YA	A 656	
S 335K2G3			E 36-4	Fe 510 DD	AE355DD	SS26,44,11	50 DD				SS 490 YB	A656 gr, 50	
S 335K2G4	Fe 510 D D2							50 EE			SM 520 B		
											SM 520 C		
													A 709 gr.36, 50,50 W

Steel for Boilers and Pressure Vessels

Boiler steel plate has good strength, it can be made of boilers and components to withstand a certain long-term high temperature stress; Boiler steel plate has good toughness and low effectiveness of the tendency in the use of bending, curling, deformation processing such as cold, after more prolonged storage and use remains a good toughness; Boiler steel plate also has good weldability and resistance to intergranular corrosion.

Europe			Germany			Franch	Italy	Japan		U.K	USA
EN 10028-2	EN 10028-3	EU 113	DIN 17135	DIN 17165	DIN 17102	NFA36205	UNI5859	JIS G 3115	JIS G 3103	BS 1501	ASTM
P235 GH		FeE255KG, KW,KT	A St 35	HI	St E 255		Fe 360 1 KW	SPV 235	SB 410	151gr.360, 400,430	A 285gr.A,B,C
					W St E 255		Fe 360 2 KW				
					T St E 255		Fe 360 1 KG				A299
					E St E 255	A 37 CP, AP,FP	Fe 360 2 KG			161gr.360, 400,430	A441gr.55,60
P 265 GH	P 275 N	FeE285KG, KW,KT	A St 41	HI	St E 285		Fe 410-1-KW				
	P 275 NH				W St 285	A 42 CP, AP,FP	Fe 410-2-KW				A442 gr.55,60
	P 275 NL 1				T St E 285		Fe 410-1-KG			154gr.360A, 400A,430A	A455
	P 275 NL 2				E St E 285		Fe 410-2-KG				
P295 GH		FeE315KG, KW,KT	A St 45	17 Mn 4	St E 315		Fe 460-1-KW	SPV 315	SB450	164gr.360,400	A515gr.55,60, 65,70
					W St E 315	A 48 CP, AP,FP	Fe 460-2-KW				
					T St E 315		Fe 460-1-KG			223gr.460,490	A516gr.55,60, 65,70
					E St E 315		Fe 460-2-KG				
P 355 GH	P 355 N	FeE355KG, KW,KT	A St 52	19 Mn 8	St E 355		Fe 510-1-KW	SPV 355	SB 480	224gr.400, 430,460,490	A 537class 1
	P 355 NH				W St E 355	A 52 CP, AP,FP	Fe 510-2-KW				
	P 355 NL1				T St E 355		Fe 510-1-KG			225grade 490	A 612
	P 355 NL2				E St E 355		Fe 510-2-KG				A 622gr.A,B,C
											A737gr.B,C

Steel for gas cylinders and gas vessels

Steel for gas cylinders and gas vessels has excellent properties for deep drawing and welding and meets all the performance requirements for this application. The steel grades of this series are used for manufacturing gas cylinders by welding cold-formed parts together and normalizing the finished cylinder.

Material #	EN 10120	DIN 17155	NFA 36-211	UNI 7355	BS 5045	UNE 36129	ASTM	JIS G3116
1.0111	P245NB	H I	BS 1	Fe E 24 KR	Type A	AE 235 KR		SG 255
1.0243	P310NB	H II	BS 2	Fe E 27 KR	Type B	AE 265 KR		SG 295
1.0437	P310NB	17 Mn 4	BS 3	Fe E 31 KR	Type C	AE 345 KR		SG 325
1.0557	P355NB	19 Mn 6	BS 4	Fe E 35 KR	Type E			SG 365

Steel for large diameter pipes

Steel for large diameter pipes, just as its name implies, is the Hot-rolled structural steel plate and sheet for making Large-diameter pipe (25 centimeters (10 inch) or greater) may be ERW, EFW or Submerged Arc Welded ("SAW") pipe. Steel for large diameter pipes has excellent properties for welding and meets all the performance requirements for this application.

Material #	EN 10208-2	DIN 17172	NFA	UNI	BS	UNE	ASTM	JIS
1.0457	L 245NB	StE 240.7					Gr. B	
1.0484	L 290NB	StE 290.7					X 42	
1.0582	L 360NB	StE 360.7					X 52	
1.8972	L 415NB	StE 415.7					X 60	
1.0418	L 245MB	StE 240.7 TM					Gr. B	
1.0429	L 290MB	StE 290.7 TM					X 42	
1.0578	L 360MB	StE 360.7 TM					X 52	
1.8973	L 415MB	StE 415.7 TM					X 60	
1.8975	L 450MB	StE 445.7 TM					X 65	
1.8977	L 485MB	StE 480.7 TM					X 70	
1.8978	L 555MB						X 80	

General Construction Steel

General Construction Steel has Pure steel, micro-alloying with good mechanical properties and weldability; high strength, stable yield strength, and has a low rate of tensile strength and yield strength. General Construction Steel usually be for the manufacture of high-rise building, can reduce the thickness of steel timber to enhance its manufacturing reliability,

Europe		Belgium	Germany	France	Sweden	International	Italy	Japan
EN 10025(93)	EN 10025 (90)	NBNA21201	DIN 17100	NFA35501	MNC 850 E	ISO 1052	UNI 7070	JISG
		A 330-1,2						
		A-360 1,2,3						
		A-410 1,2,3						
E 295	Fe 490-2	A 490-1,2	St 50-2	A 60-2	SIS 15,50,00	Fe E 490	Fe 490	SS 500
					SIS 15,50,01	5		
E 335	Fe 590-2	A 590-1,2	St 60-2	A 60-2	SIS 16,50,00	Fe E 690	Fe 590	
					SIS 16,50,01			
E 360	Fe 690-2	A 690-1,2	St 70-2	A 70-2	SIS 16,55,00	Fe E 690	Fe 690	
					SIS 16,65,01			

Steel Resistant to Atmospherical Corrosion

The atmospheric corrosion behavior of aluminum killed carbon steel with copper and chromium additions, galvanized and ungalvanized was studied. All steels were phosphatized and painted in an industrial plant. The corrosion resistance evaluation was carried out using accelerated tests, and field tests at industrial weathering sites.

Europe	UNI	Germany	France	U.K.	Canada	U.S.A	International	JIS
EN 10155	EU 155	WBL 087	NFA 35502	BS 4360	CSA G 4021	ASTM	ISO 4952	
		W St 37.2	E 24 W 2				Fe 235W	SMA50AW
S 235 J0W	Fe 360 CK1		E 24 W 3					SMA50CP
S 235 J2W	Fe 360 DK1	W St 37.3	E 24 W 4					
S 355 J0W	Fe 510 C2K1		E 36 WB 3	WR 50 B	gr 350 -A AT	A242 gr1	Fe 355 W	
S 355 J2G 1W	Fe 510 D2K1	W St 52.3	E 36 WB 4	WR 50 C	gr 400 -A AT	A 600 A,B,C		
S 355 J2G 2W								
S 355 K2G 1W								
S 366 K2G 2W								

Fine-grain structural steels, normalised rolled

Fine-grain Structural Steel grades are characterised by a minimum yield strength of 275 - 460 MPa, with good weldability and high resistance to brittle cracking.

Material #	EN 10111	NFA 36-301	UNI 5867	BS 1449	ASTM - SAE
1.049	S275N		Fe E 275 KGN		A 572 Gr. 42
1.0491	S275NL		Fe E 275 KTN	43 EE	A 633 Gr. A
1.0545	S355N	E 355 R	Fe E 355 KGN	50 E	A 572 Gr. 50
1.0546	S355NL	E 355 FP	Fe E 355 KTN	50 EE	A 633 Gr. C, D A 537 Cl. 1
1.8902	S420N	E 420 R	Fe E 420 KGN		A 255 Gr. D
1.8912	S420NL	E 420 FP		50 F	A 633 Gr. E / A 738 Gr. C A 572 Gr. 60
Material #	EN 10113-3	NFA 36-201	UNI 7382	BS 4360	ASTM
1.8818	S275M		Fe E 275 KGTM		
1.8819	S275ML		Fe E 275 KTTM		
1.8823	S355M	E 355 R	Fe E 355 KGTM		A 572 Gr. C
1.8834	S355ML	E 355 FP	Fe E 355 KTTM	50 EE	A 633 Gr. C
1.8825	S420M	E 420 R			A 572 Gr. 60
1.8836	S420ML	E 420 FP			A 633 Gr. E
1.8827	S460M	E 460 R	Fe E 460 KGTM		A 572 Gr. 65
1.8838	S460ML	E 460 FP	Fe E 460 KGTM	55 EE	A 572 Gr. 65

Steel with Cr., Mo.,Cr-Mo.

Steel with Cr., Mo.,Cr-Mo. Means the alloy steel whose alloy content are some Cr,Mo,or Cr-Mo.

Most of Steel with Cr., Mo.,Cr-Mo. is belong to alloy structural tool steel or the steel for pressure vessels

Europe	Germany	France	Italy	Sweden	Japan	U.K.	U.S.A
EN 10028-2	DIN 17155	AFNOR 36206	UNI 5869	MNC830E	JIS 3103	BS 1501 part 2	ASTM
16 Mo 3	16 Mo 3	15 D 3	16 Mo 3				A202
		18 MD 4.05	16 Mo 6	22.16.04	450 M	271	gr. A,B
		15 MDV 4.05		22.18.04	490 M		A 204
		15 CD 2.05					gr.A,B,C
14 Cr Mo 45	13 Cr Mo 44	15 CD 4.05	14 Cr Mo 46			620 gr.27,31	A 302 gr.A,B
						621 gr. A,B	A 387 gr.2,11,12
						622 gr.31	

Boiler steels

Boiler plates come in a variety of grades and thickness and are produced to a very high quality, designed to withstand the internal pressure in boilers and valves. Boiler steel plate is very popular due to its diversity of use and longevity.

Material #	EN 10028-2	DIN 17155	NFA 36-205	UNI 5869	BS 1501	UNE 36087	ASTM	JIS G3115
1.0345	P235GH	HI	A 37 CP	Fe 360 - 1KW	161 Gr. 360 / 164 Gr. 360	A 37 RCI	A 285 Gr. C-A 414 Gr. C / A 518 Gr. 55	SPV 24
1.0425	P265GH	HI1	A 42 CP	Fe 410 - 1KW	161 Gr. 400 / 164 Gr. 400 / 224 Gr. 400	A 42 RCI	A 414 Gr. E / A 516 Gr. 60	
1.0481	P295GH	17 Mn 4	A 48 CP	Fe 460 - 1KW	224 Gr. 490	A 47 RCI	A 414 Gr. F / A 516 Gr. 65	SPV 32
1.0473	P355GH	19 Mn 6	A 52 CP	Fe 510 - 1KW		A 52 RCI	A 414 Gr. G	SPV 36
1.5415	16Mo3	15 Mo 3	15 D3	15 Mo 3	1503 - 243 B	16 Mo 3	A 204 Gr. B	
1.7335	13CrMo4-5	13CrMo 4 4	15 CD 4-05	14 CrMo 4.5	620 Gr. 27	14 CrMo 4.5	A 387 Gr. 12	
1.738	10CrMo9-10	10CrMo 9 10	10 CD 9.10		622 Gr. 31		A 387 Gr. 22	
1.7383	11CrMo9-10			12 CrMO 9.10		12 CrMo 9.10		

Steel for Welded Tubes

Welded mechanical steel tubing is used in a multitude of applications where strength, appearance, ease of fabrication, resistance to torsion, and maximum strength to weight ratio are required.

Germany	DIN 17,172	St E 210.7	St E 240.7	St E 290, 7 (TM)	St E 320, 7 (TM)	St E 360, 7 (TM)	St E 385, 7 (TM)	St E 415, 7 (TM)	St E 445, 7 (TM)	St E 480, 7 (TM)
U.S.A	API 4L, 5L	A	B	X 42	X 48	X 52	X 56	X 60	X 65	X 70

Fine-grain structural steels, thermomechanically rolled

Fine-grain structural steel grades are characterised by a minimum yield strength of 275 - 460 MPa, by good weldability and high resistance to brittle cracking.

Material #	EN 10113-3	SEW 083	NFA 36-201	UNI 7382	BS 4360	UNE	ASTM	JIS
1.8818	S275M	StE 275 TM		Fe E 275 KGTM				
1.8819	S275ML	TSIE 275 TM		Fe E 275 KTTM				
1.8823	S355M	StE 355 TM	E 355 R	Fe E 355 KGTM			A 572 Gr. C	
1.8834	S355ML	TSIE 355 TM	E 355 FP	Fe E 355 KTTM	50 EE		A 633 Gr. C	
1.8825	S420M	StE 420 TM	E 420 R				A 572 Gr. 60	
1.8836	S420ML	TSIE 420 TM	E 420 FP				A 633 Gr. E	
1.8827	S460M	StE 460 TM	E 460 R	Fe E 460 KGTM			A 572 Gr. 65	
1.8838	S460ML	TSIE 460 TM	E 460 FP	Fe E 460 KGTM	55 EE		A 572 Gr. 65	

Stamping and cold forming steels

Stamping and cold forming steels sheets (deep-drawing) are suitable for deep-drawing and cold forming. The sheets are weldable; higher grades are suitable for surface treatment by hot dipping, enameling or other coating methods.

Material #	EN 10111	DIN 1614/2	NFA 36-301	UNI 5867	BS 1449	UNE 36.093	ASTM - SAE	JIS G3131
1.0332	DD11	StW 22	1 C	FeP 11	HR 3	AP 11	A 621 CQ - SAE 1010	SPHD
1.0398	DD12	RRStW 23					A 621 DQ - SAE 1008	SPHE
1.0335	DD12	StW 24	3 C	FeP 13	HR 1	AP 13	A 622 DQ - SAE 1006 AK	SPHE AK
1.0389	DD14		3 CT	Fe E 35 KR	Type E			SG 365

High strength steels for cold-forming, normalised

High Yield strength Steel grades are characterised by a minimum yield strength of 380 to 700 N/mm2, by good weldability and high resistance to brittle cracking.

Material #	EN 10149-3	SEW 092	NFA	UNI	BS 1149	UNE	ASTM	JIS
1.0971	S260NC	QStE 260 N						
					HR 40/30			
1.0973	S315NC							
					HR 43/35			
1.0977	S355NC							
					HR 46/40			
1.0981	S420NC	QStE 420 N						
					HR 50/45			

Steel For Ship Building

Shipbuilding steel, also known as hull steel, can be divided into the following types: steel plates, angle steel, flat-bulb steel, flat bar, steel pipe, and steel bar. The above steel is the main steel type for shipbuilding.

Moreover, sometimes stainless steel also can be used in shipbuilding.

Lloyds	Norske Veritas	Germanischer Lloyds	Bureau Veritas	American Bureau of Shipping	USSR Register	Nippon Kaigi Kyoka
A	A	A	A	A	A	A
B	B	B	B	B	B	B
D	D	D	D	SS	D	D
E	E	E	E	E	E	E
CD/DS						
NV A 27 S						
NV D 27 S						
NV D 27 S						
AH 32	NV A 32	A 32	AH 32	AH 32	A 32	
DH 32	NV 32	D 32	DH 32	DH 32	D 32	
EH 32	NV E 32	E 32	EH 32	EH 32	E 32	
AH 34 S						
DH 34 S						
EH 34 S						
AH 36	NV A 36	A 36	AH 36	AH 36	A 36	
DH 36	NV D 36	D 36	DH 36	DH 36	D 36	
EH 36	NV E 36	E 36	EH 36	EH 36	E 36	
NV A 40						
NV D 40						
NV E 40						
NV A 420						
NV D 420						
NV E 420						

Simple pressure vessels steel

BEBON STEEL have a global reputation for the supply of high quality pressure vessel steel to these fabricators and many of them are suppliers to some of the worlds largest gas, oil and petrochemical companies.

Material #	EN 10207	DIN	NFA 36-205	UNI 5869	BS 1501	UNE 36080	ASTM	JIS
1.0112	P235S	SPH 235	A 37 AP	Fe 360-2KW	164-360B LT20	AE 235 C		
1.013	P265S	SPH 265	A 42 AP	Fe 410-2KW	164-400B LT20	SPH 265		
1.11	P275SL	SPH 275						

General purpose structural steels

General purpose structural steel is used for commercial & industrial building structure: pre-engineered buildings, pre-fabricated buildings, car parks, workshops, sports stadiums, warehouses.

Material #	EN 10025	DIN 17100	NFA 35-501	UNI 7070	BS 4360	UNE 36.080	ASTM	JIS G3101
1.0035	S185	St 33	A 33	Fe 320		A 310-0	A 283 B - A 569 CQ	SS 330
1.0037	S235JR	St 37-2	E 24-2	Fe 360 B	40 A		A 283 C - A 570 Gr. 33	
1.0038	S235JRG2	RSt 37-2	E 24-2 NE		40 B	AE 235 B-FN		
1.0116	S235J2G3	St 37-3 N	E 24-4	Fe 360 D	40 D	AE 235 D		
1.0117	S235J2G4							
1.0044	S275JR	St 44-2	E 28-2	Fe 430 B	43 B	AE 275 B	A 283 D - A 36	SS 400
1.0143	S275JO	St 44-3 U	E 28-3	Fe 430 C	43 C	AE 275 C	A 578 Gr. 70	
1.0144	S275J2G3	St 44-3 N	E 28-4	Fe 430 D	43 D	AE 275 D	A 633 Gr. A	
1.0145	S275J2G4							
1.0045	S355JR		E 36-2	Fe 510 B	50 B	AE 355 B	A 572 Gr. 50 - A 678 Gr. A	SS 490
1.0553	S355JO	St 52-3 U	E 36-3	Fe 510 C	50 C	AE 355 C	A 441	
1.057	S355J2G3	St 52-3 N		Fe 510 D	50 D	AE 355 D		
1.0577	S355J2G4							
1.0595	S355K2G3		E 36-4		50 DD			
1.0596	S355K2G4							
1.005	E295	St 50-2	A 50-2	Fe 490		A 490		SS 500
1.006	E335	St 60-2	A 60-2	Fe 590		A 590		
1.007	E360	St 70-2	A 70-2	Fe 690		A 690		

High carbon Steel

High carbon Steel can be also used for applications in which high strength, hardness and wear resistance are necessary, such as wear parts, knives, saw blades, springs, gear wheels, chains, brackets, washers etc.

Material #	EN 10083-2	DIN 17200	NFA 33-101	UNI 7846	BS 970	UNE 36011	SAE J 403-AISI	JIS G 4051
1.0501	C35	C 35	AF55-C35	C 35	070 M 36	C 35 k	1035	S 35 C
1.0511	C40	C 40	AF60-C45	C 40	070 M 40		1038 / 1040	S 40 C
1.0503	C45	C 45	AF65-C45	C 45	070 M 46	C 45 k	1042 / 1045	S 45 C
1.054	C50	C 50			070 M 50		1049 / 1050	S 50 C
1.0535	C55	C 55	AF70-C55	C 55	070 M 55	C 55 k	1055	S 55 C
1.0601	C60	C 60			070 M 60		1060	S 58 C
1.0603	1 C 67	C 67	XC 68	C 67	080A67		1070	
1.0605	1 C 75	C 75	XC 75	C 75	080A72		1074	

High yield strength cold forming steels

High yield cold forming steels offer both strength and formability, with excellent surface quality, dimensional and geometrical accuracy and uniformity of properties.

Material #	EN 10149-2	SEW 092	NFA 36-231	UNI 8890	BS 1449	UNE	A 517 / A 607 / J 1392	JIS
1.0972	S315MC		E 315 D		HR 43F35		045 XLK	
1.0974		QStE 340 TM					Gr. 50 / Gr. 50	
1.0976	S355MC		E 355 D	Fe E 355 TM			050 XLK	
1.0978		QStE 380 TM					Gr. 55	
1.098	S420MC	QStE 420 TM	E 420 D	Fe E 420 TM	HR 50F45		Gr. 60 / Gr. 60 / 060 XLK	
1.0982	S460MC	QStE 460 TM					Gr. 65	
1.0984	S500MC	QStE 500 TM	E 490 D	Fe E 490 TM			Gr. 70 / Gr. 70 / 070 XLK	
1.0986	S550MC	QStE 550 TM	E 560 D	Fe E 560 TM			/ Gr. 80 / 080 XLK	
1.8969	S600MC		E 620 D		HR 68F62			
1.8976	S650MC							
1.8974	S700MC	QStE 690 TM	E 690 D				ASTM A514	

Structural steels with enhanced resistance to atmosphere corrosion

Resistant to Atmospheric Corrosion Steel also can be called weathering resistant steel or Atmospheric corrosion resistant structural quality steel.

Material #	EN 10155	SEW 087	NFA 35-502	UNI	BS 4360	UNE	ASTM	JIS G3114
1.8961	S235J2W	WTS t 37-3	E 24 W 4	Fe 360 DK 1				
1.8945	S355J0WP		E 36 WA 3	Fe 510 C1K1	WR 50 A			
1.8946	S355J2WP		E 36 WA 4	Fe 510 D1K1			A 242 Type 1	
1.8959	S355J0W		E 36 WB 3	Fe 510 C2K1	WR 50 B		A 588 - A 242 Gr. 1	SMA 50 AW
1.8963	S355J2G1W	WTS t 52-3		Fe 510 D2K1	WR 50 C		A 588 Gr. A	to
1.8965	S355J2G2W						A 709 Gr. 50 W	SMA 50 CP
1.8966	S355K2G1W		E 36 WB 4					
1.8967	S355K2G2W							

High Yield Steel

High yield cold forming steel plate offers both strength and formability, with excellent surface quality, dimensional and geometrical accuracy and uniformity of properties. Steel structures can be made lighter which means that the payload of machines and equipment can be increased and fuel consumption reduced.

Europe	Germany	France	Sweden	U.K.	Canada	Japan	USA	
EN 10028-3	DIN 17102	NFA 36201	NFA 35207	MNC 810E	BS 4360	CSA G40-21	JIS 3101	ASTM
	STE 380	E 375R		SS 21,42,01		400 W, WT	SS 540	A 572
	WSt E 380	E 375 FP		SS 21,44,01				gr. 60,65
	T St E 380			SS 21,45,01				
	E St E 380							A 633 grade E
				A 550 AP, FP	AE 410 DD			
	St E 420	E 420 R		SS 26,52,00				
	W St E 420	E 420 FP		SS 26,54,11				
	T St E 420							
	E St E 420							
				A 590 AP, FP	55 C, EE	(3116)SPV 450	(3106) SM 570	A 656
P 460 N	St E 460	E 460 R						gr 60,70,80
P 460 NH	W St E 460	E 460 FP						
P 460 NL1	T St E 460							
P 460 NL 2	E St E 460							

Weldable normalized fine grained pressure vessel steels

The fine grained pressure vessel steels grades rolled under normalised conditions offer good cold-forming and hot-forming properties without negatively affecting the material properties.

Material #	EN 10028-3	DIN 17102	NFA 36-207	UNI 7382	BS 1501	UNE 36081	ASTM	JIS
1.0486	P275N	StE 285			224 Gr. 400			
1.0487	P275NH	WStE 285			224 Gr. 430		A 516 Gr. 60	
1.0488	P275NL1	TSStE 285					A 662 Gr. A	
1.1104	P275NL2	ESStE 285						
1.0562	P355N	StE 355	A 510 AP	Fe E 355 KG	223 Gr. 490	AE 355 KG	A 537 CL 1	
1.0565	P355NH	WStE 355	A 510 AP	Fe E 355-2	224 Gr. 490		A 662 Gr. C	
1.0566	P355NL1	TSStE 355	A 510 FP 1	Fe E 355-3	224 Gr. 490		A 737 Gr. B	
1.1106	P355NL2	ESStE 355						

Successful cases

As many persons know there is many steel mills in china who is famous for it's STAINLESS STEEL . So in order to enrich Bebon's product. We also deal with stainless steel product.

For more information about stainless steel, please refer to our website:

http://www.stainless-steel-plates.com/. In July , 2011. We met about business partner --OAO

'KERAMIN' from BELARUS . Our this partner is a great and famous manufacture in European in ceramic tile industry.

We exported 217 mt stainless steel to them. Finished the order during 2 months, did transportation by

3 times according to customer's requirement. We provided them with our ex-stock goods which

manufactured in Feb,2011.

The following is the Mill Test Certificate on this order

联众（广州）不锈钢有限公司
LIANZHONG STAINLESS STEEL CORPORATION

品质证明书
INSPECTION CERTIFICATE

客户: 广州联众不锈钢有限公司
客户编号: 010010
订单号: S1100410

品质书号码: B00942943
日期: 2011-2-5

产品名称: 冷轧不锈钢板
规格: Q/LZBG 2.2009 L1

产品编号 Product ID	化学成分 Chemical Composition										力学性能 Mechanical Properties			硬度试验 Hardness Test	弯度试验 Bend Test
	C	Si	Mn	P	S	Ni	Cr	Co	N	Mo	屈服强度 Yield Strength	抗拉强度 Tensile Strength	伸长率 Elongation		
02S163113R	0.071	0.50	9.96	0.037	0.002	1.03	14.21	1.33	0.152		205	515	35	97	
02S163113C	0.071	0.50	9.96	0.037	0.002	1.03	14.21	1.33	0.152		205	515	35	97	
02S163352B	0.075	0.57	9.54	0.045	0.003	1.02	14.30	1.33	0.154		205	515	35	97	
02S163352C	0.075	0.57	9.54	0.045	0.003	1.02	14.30	1.33	0.154		205	515	35	97	
02S163391A	0.085	0.48	10.04	0.044	0.002	1.04	14.25	1.33	0.146		205	515	35	97	
02S163391B	0.085	0.48	10.04	0.044	0.002	1.04	14.25	1.33	0.146		205	515	35	97	
02S163391C	0.085	0.48	10.04	0.044	0.002	1.04	14.25	1.33	0.146		205	515	35	97	
02S163392A	0.085	0.48	10.04	0.044	0.002	1.04	14.25	1.33	0.146		205	515	35	97	
02S163392B	0.085	0.48	10.04	0.044	0.002	1.04	14.25	1.33	0.146		205	515	35	97	
02S163392C	0.085	0.48	10.04	0.044	0.002	1.04	14.25	1.33	0.146		205	515	35	97	

产品编号: 02S163113R, 02S163113C, 02S163352B, 02S163352C, 02S163391A, 02S163391B, 02S163391C, 02S163392A, 02S163392B, 02S163392C

备注: 1. 证明本表所列产品, 均按材料规格制造及测试, 并符合规定之要求。
2. 本产品经检验合格后方可出厂。
3. 本报告中不得再行复制。

品质部长: Manager of Quality Assurance Department

Successful cases

The steel for shipbuilding is Bebon's main product. We regards shipbuilding steel as our No.1 important product. Just because of reason, and also in order to meet different requirement. We build a Pre-treatment Line with one of our business partner in Shanghai.

Pre-treatment mean " Shot blasting and shop primed" on the shipbuilding steel plates surface. Our this service satisfy many shipyard customers. They can get " one-step" service from us.

For more information about shipbuilding steel, please refer to our website: www.shipbuilding-steel.com

In March 2011, we exported 130 tons shipbuilding steel to JAYA Shipyard in Singapore.

The following picture is one piece of Mill Test Certificate on this order.

新余钢铁股份有限公司
XINYU IRON & STEEL CO., LTD.

产品质量证明书
INSPECTION CERTIFICATE

中国·江西省新余市冶金路1号 邮编: 338001
No. 1 YEJIN ROAD, XINYU CITY, JIANGXI PROVINCE, CHINA
POST CODE: 338001
TEL: +86 790-6294511 FAX: +86 790-6294173

本公司生产结构用钢板荣获中国名牌产品称号(有效期: 2006.9-2011.9),
并通过 ABS, BV, CCS, DNV, GL, KR, LR, NK, RINA 船级社工厂认证。

序号 NO	炉号 HEAT NO	牌号 STEEL GRADE	尺寸及重量 DIMENSION & WEIGHT				化学成分 % CHEMICAL COMPOSITION								力学性能 MECHANICAL PROPERTIES				冲击试验 IMPACT TEST			交货状态 DELIVERY CONDITION		客户订单号 CUSTOMER ORDER NO															
			厚度 THICK	宽度 WIDTH	长度 LENGTH	重量 WEIGHT	C	Si	Mn	S	P	Al	Nb	Y.S	T.S	E.L	C.B	冲击功 IMPACT	冲击功 IMPACT	冲击功 IMPACT	冲击功 IMPACT	冲击功 IMPACT																	
1	Z1-24903	J19-C0991A	MA36	18	2433	9144	4	12.600	10	21	128	7	19	18	23	420	525	25.0	L	A	0.251	233	215	225	1	2	3	AVE	1	2	3	AVE	TW						
2	Z1-24941	J19-C0991A	MA36	18	2433	9144	5	15.750	10	21	128	7	19	18	23	420	500	24.5	L	A	0.379	110	209	184											TW				
3	Z1-25263	J19-C0827A	MA36	18	2433	9144	4	12.600	10	29	124	6	20	23	25	450	525	28.5	L	A	0.380	196	177	187											TW				
4	Z1-25273	J19-C0036A	MA36	12	2433	9144	18	39.900	10	29	136	6	15	23	25	475	565	24.5	L	A	0.195	230	175	200												TW			
5	Z1-25278	J19-C0036A	MA36	12	2433	9144	12	15.200	10	29	136	6	15	23	25	450	505	29.5	L	A	0.184	177	197	186													TW		
6	Z1-25279	J19-C0210A	MA36	12	2433	9144	5	10.500	10	26	135	5	21	26	25	470	555	29.5	L	A	0.186	209	184	180														TW	

备注: 1. 位置方向 LOCATION AND ORIENTATION: 1-纵向 TRANS L; 2-纵向 LONG; 3-试样尺寸 SAMPLE SIZE A10*10*55; 4-10*7.5*55; 5-10*5.0*55; 6-10*2.5*55; 7-10*2.5*55; 8-2向厚度收缩 THROUGH THICKNESS REDUCTION IN AREA; 9-交货状态 STATE OF DELIVERY: 9-未处理 UNANNEALED; 10-球化退火 Spheroidal; 11-正火 TEMPERED; 12-退火 ANNEALED; 13-冷轧带钢 CONTROLLED ROLLED THE-TEMP; 14-热轧 AS HOT ROLLED

证明本材料系采用已获国家认证之要求生产, 并符合船级社的要求进行试验, 取得满意的结果。
材料检测数据和船级社的 R-3342 号工厂合格协议进行标识, 由 DNV 定期审查。
We hereby certify that the material has been made by an approved process and has been satisfactorily tested in accordance with DNV Rules for Classification. The products are marked in accordance with the survey arrangement authorized by DNV in ISA No R-3342 which is controlled by regular auditing.

CERTIFICATE OF APPROVAL NO. AM-4409
SURVEYOR: [Signature]
DATE: 2011-5-24

制表 TABULATOR: 李芸
打印 PRINTER:

Successful cases

HENAN BEBON INTERNATIONAL CO.,LTD

Based on the domestic rich product resources and the rich experience in steel industry. BEBON's service has already spread many countries in Europe, America, Southeast Asia, Middle East, South America, Africa, etc.

Now, we show some of our customer reference. December, 2010 We cooperated with CAT MINH company in VIETNAM, taking part in one project. This project use our about 304 tons steel plates. The grade of these steel plates is S355J2WP. This material is a kind of weather resistant steel in European standard.

More information about weather resistant steel, please refer to our special website: www.corten-a-b.com

The following picture is one piece of the Mill Test Certificate on this project.

武汉钢铁股份有限公司
WUHAN IRON & STEEL COMPANY LIMITED

产品质量证明书
CERTIFICATE OF PRODUCT QUALITY

地址: 中国·武汉·青山
ADDRESS: (ONGSHAN) WUBAN, P.R.C.
邮编: 430083
POST CODE: 430083
TELEPHONE: (027) 86894499

订单位: 上海坤宝钢铁贸易有限公司
收货单位: 上海坤宝钢铁贸易有限公司
技术条件: EN10025-5 S355J2WP
检验: 武钢检验 (WISCO INSPECTION) 份数: 3 合同号: 1102228067

项目	产品序号	规格及重量				炉号	钢卷号	检验批号	化学成分											*BA 等级	
		厚度	宽度	长度	重量				T	C	Si	Mn	P	S	Al	Ni	Cr	Ti	Mo		V
01	HJG3240746	3.00	1500	6000	1 0.212	B913075	02158099	A	7	36	42	86	15	31	24	42	3	300	515	370	OK
02	HJG3240752	4.00	1500	6000	677 191.320	B913075	02158101	A	7	36	42	86	15	31	24	42	3	300	515	370	OK
03	HJG3240766	5.00	1500	6000	8 2.826	B913075	02158101	A	7	36	42	86	15	31	24	42	3	300	515	370	OK
合计 TOTAL		数量 QTY: 676 重量 WEIGHT: 181358.1																			
备注 MARK																					
注释 NOTES		1. 屈服强度 2. 抗拉强度 3. 伸长率 4. 断面收缩率 5. 冲击功 6. 硬度 7. 晶粒度 8. 非金属夹杂物 9. 偏析 10. 脱碳层深度 11. 表面缺陷 12. 尺寸偏差 13. 重量偏差 14. 化学成分 15. 力学性能 16. 无损检测 17. 表面质量 18. 包装要求 19. 其他要求																			
负责人: SURVYOR TO		质量检验中心主任																			

Successful cases

Bebon's product is not only steel plates, but also some shaped steel. Like flat bar, steel pipe, angle steel, bulb steel bar and so on.

In January, 2011. We exported about 60 tons Rectangular Tube to Indonesia. Our customer is PT KERETA API. We have great advantage in weld and seamless steel pipe in ASTM A106, A53, API standard.

For more information about our steel pipe product. Please refer to our website:

<http://www.steel-tube-steel-pipe.com>.

The following picture is the Mill Test Certificate on this order:

合肥紫金制管有限公司

产品质量证明书
MILL TEST REPORT

订单位: 河南贝邦进出口贸易有限公司
BUYER: 河南贝邦进出口贸易有限公司
货物名称: 矩形钢管
DESCRIPTION: RECTANGULAR
质量书编号: Q.T.NO.: HFZJ11011204

故为您单位制造之钢管, 业经本公司质量管理部门按照标准技术要求合格检验合格, 特发此证
THIS IS TO CERTIFY THAT IN ACCORDANCE WITH THE RELEVANT SPECIFICATIONS AND CONTRACTS, THE STEEL PIPES AND TUBES MANUFACTURED FOR YOUR UNIT WERE TESTED QUALIFIED BY OUR QUALITY CONTROL DEPARTMENT.
检查依据: S355JR 理论重量, 合计 250 吨 3000 米, 63.44 吨
THE PIPES AND TUBES ARE TESTED ACCORDING TO S355JR AND COUNTED NOMINALLY AMOUNT 250 PCS LENGTHS 3000 METERS, 63.44 TONS

材质	炉号	规格	支数	长度	重量	母材化学成分 (%)					母材物理性能		
						S	Mn	P	Si	屈服点 (MPa)	抗拉强度 (MPa)	伸长率 A%	
S355JR	11N03278	150X75X6X1200	250	3000	0.15	0.003	1.46	0.011	0.3	520	520	27	

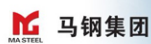
说明: 1. 承压管与一般管混用时, 一律按一般管保证
NOTE: 1. WHEN LINE PIPES FOR PRESSURE SERVICE AND FOR ORDINARY ARE USED IN THE MIXED CONDITIONS, THE QUALITY INSURANCE SHOULD BE TAKEN IN THE ORDINARY ONES
2. 运输装卸损坏不在检查范围内。
2. THE PIPES DAMAGED DURING TRANSPORTATION, LOADING AND UNLOADING ARE NOT WITHIN THE SCOPE OF INSPECTION

负责人: 吴元根
PERSON IN CHARGE: 吴元根
检验员: 梁利
INSPECTOR: 梁利
发货员: 梁利
DELIVERY PERSON: 梁利
发货日期: 梁利
DATE: 梁利

ISO International Accreditation



Cooperative partner



Top Sales



Name: Sabrina Liu E-mail: sabrina@bebonchina.com skype: bebonchina

Sabrina liu--" I believe there is no impossibility as long as you treat your customers and your work as important as your life "



Name: Jim Zhao E-mail: jim@bebonchina.com skype: james-bebon

I have been working in the international business more than 7 years, having a lot of experience in dealing with steel export. Expect to work with you, my friend! I will bring you something better than you expect!



Name: Carrie He E-mail: carrie@bebonchina.com skype: beboncarrie

Who have more than 5 years International steel trade experience. Well know steel industry, foreign trade procedures and international practice. If you need any help of steel, please just talk to her.



Name: Kevin Zhang E-mail: kevin@bebonchina.com skype: bebonkevin

Kevin is responsible for steel plate and steel pipe from the sales department, Please contact me if you have any question about steel plate or steel pipe, your contentment that is what we pursue.



Name: Summer Song E-mail: bebonsummer@bebonchina.com skype: bebonsummer

Summer Song bebonsummer@bebonchina.com Believe in yourself!Lowest Price--Fast Delivery --Best Quality.



Name: Sophia Zhao E-mail: bebonsophia@bebonchina.com skype: bebonsophia

Sophia zhao--Best quality, best price,efficient & timely service for our win-win cooperation in fresh 2012.



Name: Lotus Li E-mail: lotus@bebonchina.com skype: bebonlotus

An cautious,optimistic, warmhearted,and responsible woman, will offer you the competitive price, high quality steels for you and will do the best to support you. So any need about the steel plate and sheet,please contact me !